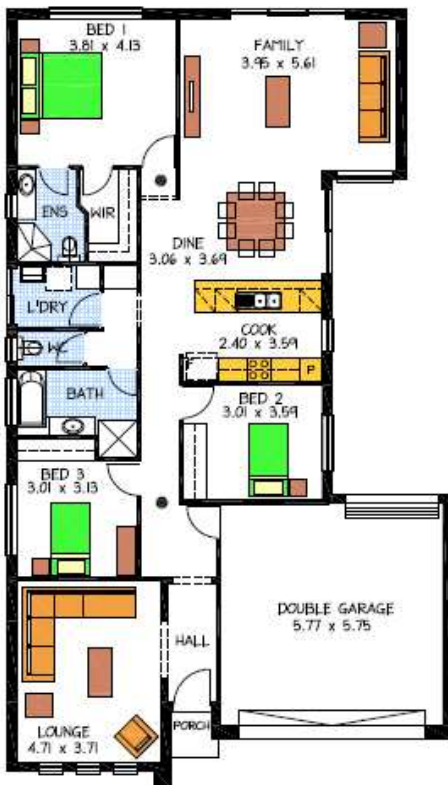




Home & Land Packages



KYTON 152

LOT6 'ENCOUNTER LAKES' VICTOR HARBOR

This package includes:

- 388m2 block in the lovely 'Encounter Lakes' of Victor Harbor
- Rossdale Homes popular Kyton 152 Courtyard built to Sovereign Specifications with 2.4m ceilings
- Double garage with 5m wide auto panel lift door & internal access
- All services are allowed for including 2 phone points
- Storm-water and rainwater tank requirements are all done for you
- Quality block pavers to the driveway and perimeter paths
- Front elevation with render and paint allowing two colors and feature bookleaf stack stone to brick pier
- Wall mounted split system A/C for all year round comfort
- Tiling to front Porch, Carpets to Lounge, WIR & All Bedrooms with floating timber floors to Hall, Cook, Dine & Family
- Solar electric boosted Hot Water System
- 25 Year Structural Warranty
- 100% Absolute Fixed Price Contract with no hidden costs
- Call now to learn more about this great value house land package
- Footings and site-works price is fixed with no more to pay

Disclaimer: All care has been taken in the preparation of this material. No responsibility is taken for any errors or omissions. Details are subject to change without notification. Images for illustration purposes only. E&EO.

PACKAGE FROM: **\$407,825**

HOME: **\$217,825** LAND: **\$190,000**

FOR THIS OFFER CALL
BRAD: 0421 940 398

P: 08 8433 2000 www.rossdalehomes.com.au

 *Because trust is a must.*
**ROSSDALE
HOMES**